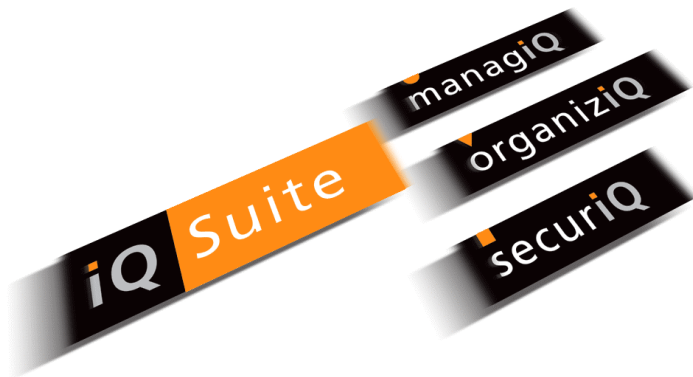


## Installation and Configuration

### Xblock Picture Analyzer for Windows NT



© 2003 GROUP Technologies AG

GROUP Technologies AG does not accept any express or implied guarantee for this documentation. This includes its quality, layout, accordance with normal usage or suitability for a particular purpose.

The product descriptions are intended as a general description only. They neither guarantee particular properties nor do they represent a warranty declaration. In the interest of technical progress, we reserve the right to change the specifications and design of our products without prior notice.



# Contents

- 1 Introduction ..... 3**
- 2 Installation..... 3**
  - 2.1 Preconditions ..... 3
  - 2.2 Performing the Installation ..... 3
    - 2.2.1 Xblock Analyzer..... 3
    - 2.2.2 Microsoft XML Parser 4.0 ..... 5
    - 2.2.3 MS Office ..... 6
- 3 Configuration ..... 6**
  - 3.1 Configuring Xblock Analyzer ..... 6
  - 3.2 Wall Job Advanced ..... 10

## 1 Introduction

This document describes how to install the Xblock Picture Analyzer for Windows NT.

It covers its installation in an existing system and its configuration.

It is assumed that the reader is familiar with iQ.Suite and its basic operation.

## 2 Installation

### 2.1 Preconditions

**Operating system:**

Windows 2000 Professional or Windows 2000 Server

**iQ.Suite:**

From 5.2 / 6.2

**Additional software:**

Microsoft MSXML4

Microsoft Office 2000

**Licenses:**

securiQ.Wall

CAL (Cobion)

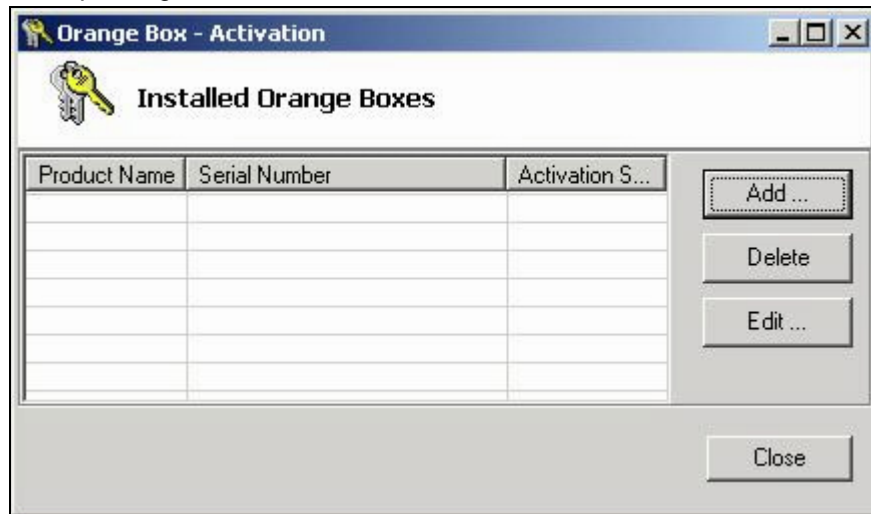
Provided the required components are being installed for the first time, the installation can be performed fully with the Domino server in operation.

### 2.2 Performing the Installation

#### 2.2.1 Xblock Analyzer

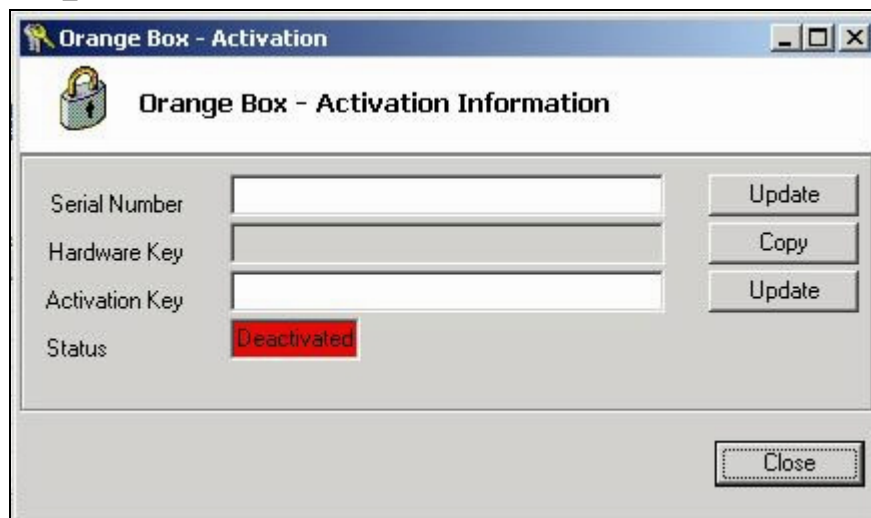
1. Copy the **xblock.zip** file to the PC on which the Domino server and iQ.Suite are already installed and working.
2. Unpack the contents of the file into the **xblock** subdirectory of the **grptools** directory in the Notes data folder.
3. Run the **Activation.exe** program to enter the CAL license:

Startup dialog:



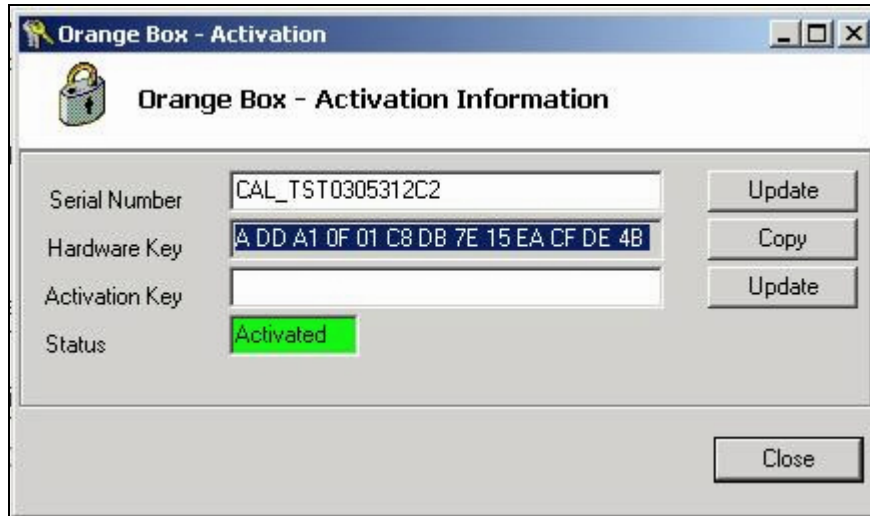
Click **Add**.

4. In the next dialog, enter the following text string in the **Serial Number** field:  
**CAL\_TST0305312C2**



Enter the **serial number** here.

The completed dialog:



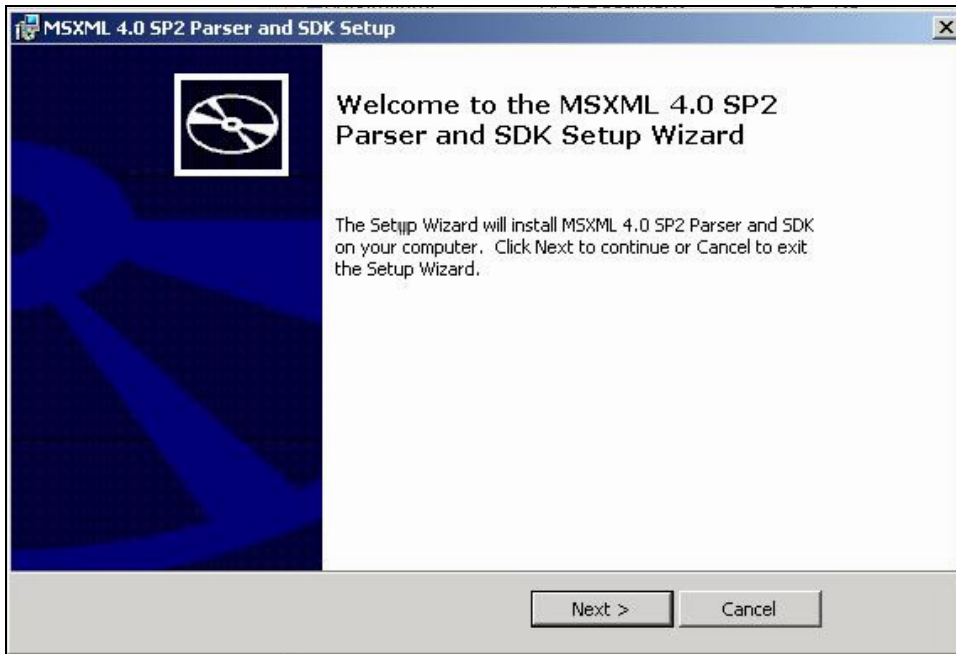
When you close the input dialog and the program, the license key should be entered correctly.

This license terminates on **May 31, 2003**. To renew your license, contact GROUP Sales.

### 2.2.2 Microsoft XML Parser 4.0

Check whether the Microsoft XML API is installed on your PC. To do this, look for the file **MSXML4.DLL** in the **system32** directory. If it exists, the XML API is installed.

If you can not find this file, install **MSXML 4.0**. The required installation package is included in **xblock.zip** and should therefore have been added to the **xblock** directory. Double-click the **msxml.msi** file to start the installation. The following dialog appears:



Carry out a standard installation. You can perform this installation with the Domino server running and you do not have to restart your PC after the installation.

### 2.2.3 MS Office

The Xblock Analyzer currently requires an installed version of Microsoft Office, in particular Word, Excel and PowerPoint.

Xblock does not work without these products.

## 3 Configuration

Once you have installed the files and entered the demo license, you can configure the Analyzer in iQ.Suite. This is done in two steps: configuring the Xblock Analyzer and configuring the actual analyze job using a Wall Advanced job.

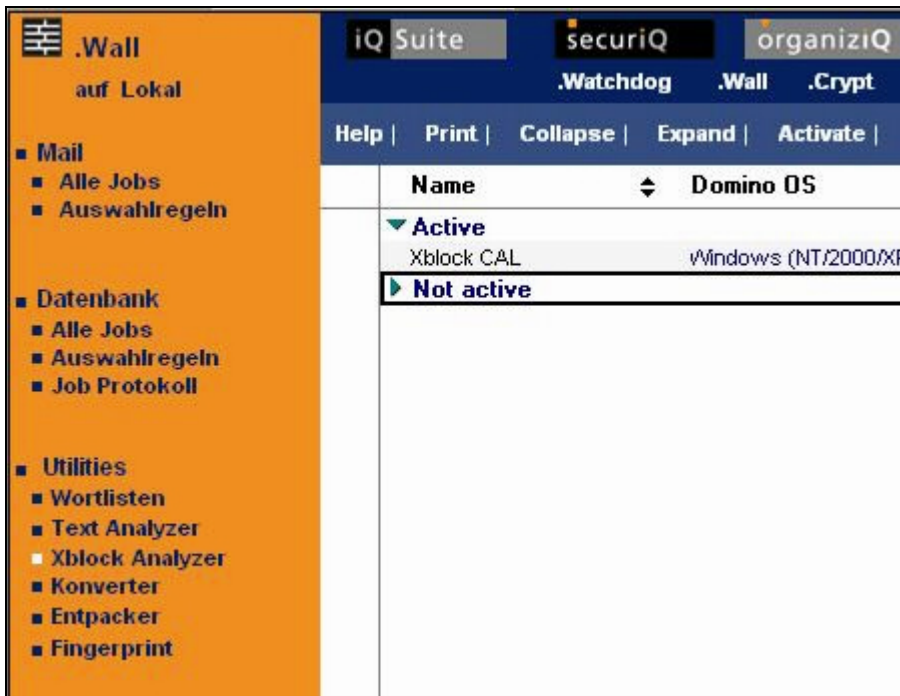
### 3.1 Configuring Xblock Analyzer

Open the iQ.Suite start page.

**Note:** The following examples show iQ.Suite 7; the procedure is the same for the older versions from 5.2/6.2. You can ignore any additional new fields for the old versions.



Under securiQ, select **.Wall** and open the Xblock Analyzer view. You get the following view (in 5.2/6.2 you get a similar view but open **.Wall** directly):



Now create a new document for the Xblock Analyzer and enter the information shown in the illustrations in the new document.

**'Xblock CAL'**  
**Utilities Analyzer**

Basics | Settings | Advanced | Misc. | Comments

**Basics**

Name	Xblock CAL
Status	<input checked="" type="radio"/> Aktiv <input type="radio"/> Nicht aktiv
Läuft auf	<input type="radio"/> Alle Dateien <input checked="" type="radio"/> Ausgewählte Dateien

**Fingerprint**  
Mindestens ein Eintrag in der Liste:

- GIF
- GIF - NAME
- JPG - FILES
- PCX
- TIF - IMAGES
- WIN ICONS (ICO)
- WINDOWS OR OS/2 BITMAP (BMP)

**Important:** Select the image formats defined in the fingerprints.

**'Xblock CAL'**  
**Utilities Analyzer**

Basics | Settings | Advanced | Misc. | Comments

**Settings**

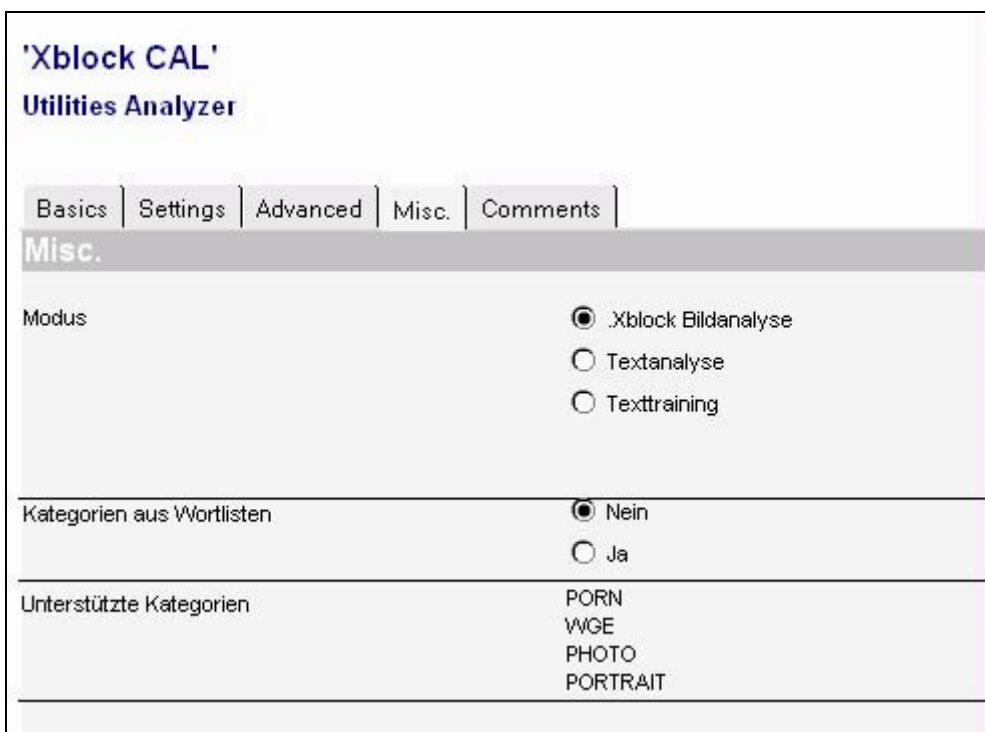
Pfad zur DLL	%execdir%\xblock\ntk_cobi.dll
--------------	-------------------------------

<u>Parametername</u>	<u>Parameterwerte</u>
DII_Data_Path	%execdir%\xblock

**Important:** The path to the DLL must be entered twice here. Wall replaces the %execdir% wildcard with the iQ.Suite program path (e.g. c:\lotus\domino\data\grptools).



**Important:** The operating system must be set correctly. This version of Xblock Analyzers is currently available only for Windows.



**Important:** The mode must be set to Xblock image analysis. The **Categories from dictionaries** and **Supported categories** fields exist only in iQ.Suite version 7.

### 3.2 Wall Job Advanced

Now create a .Wall Job Advanced.

1. In the iQ.Suite database, select the **Mail** -> **All Jobs** view.
2. Click **New**.
3. Select **.Wall Mail Job Advanced**.



4. Give the new job a name and specify the conditions under which it is to run.

**'Xblock'**  
securiQ.Wall Mail Job Advanced

**.Xblock Bildanalyse**

Basics | Operations | Misc. | Comments

**Basics**

Jobname	Xblock	
Status	<input checked="" type="radio"/> Aktiv <input type="radio"/> Nicht aktiv	
Priorität	1000	
<b>Läuft auf</b>	<input type="radio"/> Alle Mails <input checked="" type="radio"/> <b>Ausgewählte Mails</b>	
Abhängigkeit vom Anhang	<input checked="" type="radio"/> Alle <input type="radio"/> Nur mit Anhang <input type="radio"/> Nur d	
Abhängigkeit von positiven Regeln	<input checked="" type="radio"/> Alle wahr <input type="radio"/> Mindestens eine wahr	
	,netSender	
Abhängigkeit von negierten Regeln	<input checked="" type="radio"/> Alle falsch <input type="radio"/> Mindestens eine falsch	
	,netSender	
Zusammenfassung der Auswahlregeln	(InetSender)	

In our example, the **Xblock** job checks every message received from the Internet. Set the job **Active**.

5. Now, under **Operations**, set the parameters for the actual checking.

**'Xblock'**  
 securiQ.Wall Mail Job Advanced

**.Xblock Bildanalyse**

Basics | Operations | Misc. | Comments

**Operations**

---

**Modus**  **.Xblock Bildanalyse**  
 **Textanalyse**

---

Analyzer Xblock CAL

---

Entpacker

---

Analysiere Elemente  Anhänge  
 Inline-Bilder

---

<u>Kategorien</u>	<u>Schwellwerte für Kategorien</u>
PORN	50
WGE	50
PHOTO	50
PORTRAIT	50

Use the Xblock Analyzer **Xblock CAL** that you have configured earlier.

Then enter the denied categories and their threshold values.

The available categories are

- PORN
- WGE
- PHOTO
- PORTRAIT (from iQ.Suite 7)

The possible threshold values range from 1 to 100. A threshold value of 50 is usually best. Other threshold values may be better suited to your environment: if the number of false alarms is too high, increase the threshold value; if many images in the denied categories are not detected, reduce the threshold value.

The general rule is:

- low threshold value → higher number of false positives;

- high threshold value → higher number of false negatives.

Finally, define the desired alarm actions. Initially, it is advisable not to notify the sender or the recipient and not to delete messages straight away. Instead, send a notification to the administrator and place the document into quarantine until you are sure that the chosen setting is suitable for your environment.

Having made all required settings, test the system.

If you have any further questions, please contact our support.

© 2003 GROUP Technologies AG

The information in this document represents the covered subjects from the point of view of GROUP Technologies AG at the time of publication. Because GROUP Technologies must respond to changing market requirements, the information contained herein is not binding and GROUP can not guarantee that it is correct at the time of going to press.

This documentation is intended only for information. GROUP Technologies does not give any warranty – express or implied – for this document.

All product and company names in this document may be trademarks or registered trademarks of their respective owners.

#### **Headquarters**

##### **GROUP Technologies AG**

Ottostrasse 4

76227 Karlsruhe, Germany

Tel. +49(0)721-4901-0

Fax +49(0)721-4901-199

[info@group-technologies.com](mailto:info@group-technologies.com)

[www.group-technologies.com](http://www.group-technologies.com)



#### **North American Headquarters**

##### **GROUP Technologies**

321 Fortune Blvd.

Milford, MA 01757/USA

Phone +1 508-473-3332

Phone 877-476-8755 (US and Canada)

Fax +1 508-473-9940

[info.us@group-technologies.com](mailto:info.us@group-technologies.com)

[www.group-technologies.com](http://www.group-technologies.com)